



**HAL**  
open science

## Multipolar Electrode and Preamplifier Design for ENG-Signal Acquisition

Fabien Soulier, Lionel Gouyet, Guy Cathébras, Serge Bernard, David  
Guiraud, Yves Bertrand

► **To cite this version:**

Fabien Soulier, Lionel Gouyet, Guy Cathébras, Serge Bernard, David Guiraud, et al.. Multipolar Electrode and Preamplifier Design for ENG-Signal Acquisition. Ana Fred; Joaquim Filipe; Hugo Gamboa. Biomedical Engineering Systems and Technologies, 25, Springer, pp.148-159, 2008, Communications in Computer and Information Science, 978-3-540-92218-6. 10.1007/978-3-540-92219-3\_11 . lirmm-00345755

**HAL Id: lirmm-00345755**

**<https://hal-lirmm.ccsd.cnrs.fr/lirmm-00345755>**

Submitted on 15 Nov 2021

**HAL** is a multi-disciplinary open access archive for the deposit and dissemination of scientific research documents, whether they are published or not. The documents may come from teaching and research institutions in France or abroad, or from public or private research centers.

L'archive ouverte pluridisciplinaire **HAL**, est destinée au dépôt et à la diffusion de documents scientifiques de niveau recherche, publiés ou non, émanant des établissements d'enseignement et de recherche français ou étrangers, des laboratoires publics ou privés.

# Multipolar Electrode and Preamplifier Design for ENG-Signal Acquisition

Fabien Soulier<sup>1,2</sup>, Lionel Gouyet<sup>1,2</sup>, Guy Cathébras<sup>1,2</sup>, Serge Bernard<sup>1,3</sup>,  
David Guiraud<sup>1,4</sup>, and Yves Bertrand<sup>1,2</sup>

<sup>1</sup> LIRMM, 161 rue Ada, 34392 Montpellier, France,  
Firstname.Lastname@lirmm.fr

<sup>2</sup> Université Montpellier II,

<sup>3</sup> Centre National de la Recherche Scientifique

<sup>4</sup> Institut National de Recherche en Informatique et Automatique

**Abstract.** Cuff electrodes have several advantages for *in situ* recording ENG signal. They are easy to implant and not very invasive for the patient. Nevertheless, they are subject to background parasitic noise, especially the EMG generated by the muscles. We show that the use of cuff electrodes with large numbers of poles can increase their sensitivity and their selectivity with respect to an efficient noise rejection. We investigate several configurations and compare the performances of a tripolar cuff electrode versus a multipolar one in numerical simulation. On the other hand the use of cuff electrodes leads to the recording of the sum of the signals generated by all the axons within the nerve. This puts in evidence the need of signal separation techniques that require a great quantity of information. Again, we show that multipolar electrodes can solve this problem since poles can be switched one to another, provided that they are distributed along a regular tessellation.

Finally, we present the structure of an ASIC preamplifier processing a spatial filtering to obtain the Laplacian of the potential rejecting low-frequency noise.

## 1 Introduction

In a context of neural system pathologies such as spinal cord injury, Functional Electrical Stimulation (FES) techniques are the possible alternatives to restore lost sensory or motor abilities. These techniques consist in generating artificial contraction by electrical stimulation. In FES system a direct opened loop control doesn't allow efficient stimulation. In order to provide a loopback control we need sensory information (force, contact. . .) [1]. An attractive solution consists in using the natural sensors. The sensory information is propagated by associated afferent fibers. But unfortunately, in peripheral nerves the complete nerve activity due to the large number of axons makes the extraction of the studied signal particularly hard. Moreover the sensory signal seen through the nerve is a very low amplitude signal compared with the amplitude of parasitic signals. For instance, on a monopolar recording, electromyograms (EMG) created by muscle activity have amplitude about three orders of magnitude higher than the electroneurogram (ENG). In this context, the two main objectives to be able to exploit natural sensors are:

- to find a solution to separate the useful information from the complete ENG signal;

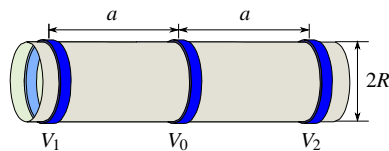
- to reject the parasitic external signals.

The classical solution consists in using multipolar electrodes, but from tripole [2] to nine pole electrode [3, 4], the selectivity of the neural information is not efficient enough to be suitable in closed loop FES system. To achieve both a better sensitivity and efficient background noise rejection we propose a new configuration of the cuff electrode with a large number of poles regularly distributed onto the cuff. In this configuration, a group of poles can behave, with suitable low level analog signal processing, like a kind of a directive antenna. Moreover, the large number of poles will allow enough channels in order to apply source separation signal processing on the ENG. Of course, the directivity of the sensor relies on the quality of the subsequent low-level analog signal processing.

In this paper, we first show how to generalize the preprocessing operations on the recorded signal from tripolar to multipolar configuration using the Laplacian formalism. Then we discuss on the optimal pole placement around the nerve regarding tessellation methods. Both the electrode configuration and the associated preprocessing circuit result from this pole distribution and must be taken into account. We particularly focus on the hexagonal seven-pole electrode, presenting the associated seven input preamplifier and preliminary simulation results.

## 2 EMG noise rejection

Cuff electrodes have been the most used in the last ten years [5–7]. They are relatively easy to implant, they are not invasive for the nerve and implantation is very stable and thus allows chronic experiments. ENG can be recorded as the potential difference cre-



**Fig. 1.** Tripolar electrode cuff model.

ated on the electrodes by the charges associated to the action potentials (AP) propagating along the nerve fibers. Fig. 1 shows a typical tripolar cuff electrode. When recording with this kind of electrode, a classic method to reject parasitic signals consists in calculating the average of the potential differences between the central pole and each of the outer poles [8, 9]:

$$V_{\text{rec}} = \frac{(V_0 - V_1) + (V_0 - V_2)}{2} = V_0 - \frac{V_1 + V_2}{2} \quad (1)$$

The last expression shows that this operation consists in:

1. averaging the signal on the outer poles, *i.e.* applying a low-pass spatial filter.

2. subtracting the result to the signal of the central pole, keeping only the high spatial frequencies.

Therefore, the recorded  $V_{\text{rec}}$  signal can be considered as spatial high-pass filtered.

More precisely, this filter is a second-order one considering that the expressions

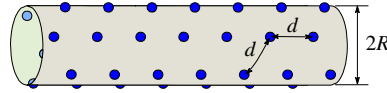
$$\frac{1}{a}(V_2 - V_0) \quad \text{and} \quad \frac{1}{a}(V_0 - V_1) \quad (2)$$

evaluate the first derivative  $\frac{dV}{dx}$ . Thus the difference

$$\frac{1}{a} \left( \frac{(V_2 - V_0)}{a} - \frac{(V_0 - V_1)}{a} \right) = \frac{2}{a^2} \left( \frac{(V_1 + V_2)}{2} - V_0 \right) \quad (3)$$

denotes the second derivative  $\frac{d^2V}{dx^2}$  that is the one-dimensional *Laplacian* of the potential. We can identify in the last expression the equation (1) without the constant factor  $-2a^{-2}$ .

Laplacian filters can reject both homogeneous potentials and linearly varying ones like those created by far EMG sources. The purpose of this new design is to build two-dimensional Laplacian using more poles to obtain isotropic rejection.



**Fig. 2.** Multipolar electrode cuff model.

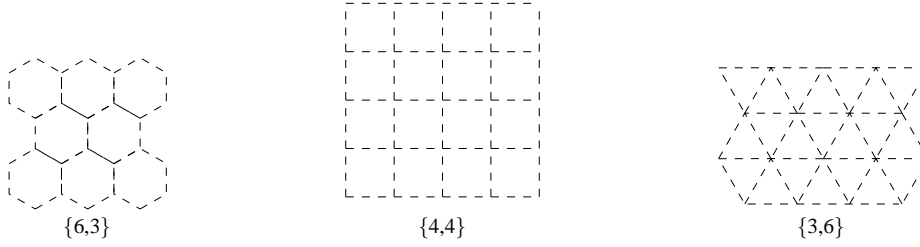
### 3 Positioning the poles

A tripolar cuff electrode [10] provides only one recording which is the superposition of all AP “seen” by the electrode at a given moment. The use of several poles on a cuff electrode (see Fig. 2) could allow us to record more signals, thus increase the quantity of neural data and facilitate the signal post-processing on the recording system.

In order to achieve optimal placement of poles, we must pay attention to three constraints:

1. The electrodes have to be placed all around the nerve, thus the poles have to be distributed onto the whole surface of the cuff.
2. The poles have to be equally spaced to simplify electronics in charge of analog signal preprocessing (weight coefficients in Laplacian preamplifier).
3. They have to be able to be substituted one to each other, so we take benefits of the maximum measurement locations, allowing powerful signal processing.

Since the cylindric shape of the cuff results from the wrapping of an initially plane device, these conditions imply to look for a regular tessellation of the plane as the positions of the poles or, more precisely, tessellations composed of regular polygons symmetrically tiling the plane. It is well known that there are exactly three type of regular tessellations [11]. They can be specified using the Schläfli symbols:  $\{3,6\}$ ,  $\{4,4\}$  and  $\{6,3\}$ .



**Fig. 3.** There are exactly three regular tessellations composed of regular polygons symmetrically tiling the plane.

The first symbol in the Schläfli notation denotes the shape of the patch (triangle, square or hexagon). On the figure 3, each vertex corresponds to a pole. Each of them being surrounded by a number of equidistant poles given by the second Schläfli symbol, respectively 6, 4 and 3.

From the previous tessellations, one can build three kinds of electrodes by selecting one central pole and its closest neighbors. Namely, we can define a mesh of:

- triangular 4-pole electrodes,
- squared 5-pole electrodes,
- hexagonal 7-pole electrodes.

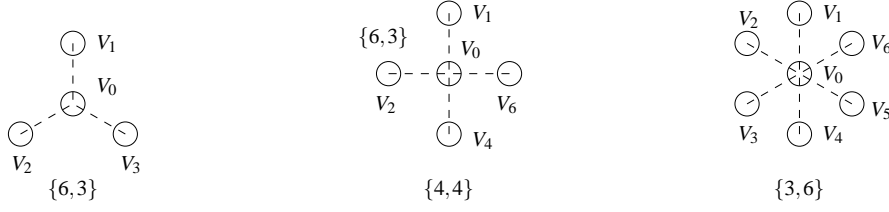
These candidates can be seen on the figure 4 and the resulting expressions for the Laplacian are:

$$V_{\text{rec}} = V_0 - \frac{1}{3} \sum_{i=1}^3 V_i \quad \text{for } \{6,3\} \quad (4)$$

$$V_{\text{rec}} = V_0 - \frac{1}{4} \sum_{i=1}^4 V_i \quad \text{for } \{4,4\} \quad (5)$$

$$V_{\text{rec}} = V_0 - \frac{1}{6} \sum_{i=1}^6 V_i \quad \text{for } \{3,6\} \quad (6)$$

One can notice that the  $\{4,4\}$  configuration correspond to the 2D Laplacian filter used in image processing [12].



**Fig. 4.** Three possible configurations of electrodes.

## 4 Numerical results

### 4.1 Action Potential modeling

In order to evaluate the performances of multipolar electrodes, we need a model for the extracellular electric field created by an AP. Let us consider a  $10\ \mu\text{m}$  diameter myelinated axon. Its Ranvier nodes are  $1\ \mu\text{m}$  long, while their diameter is  $6\ \mu\text{m}$  and their spacing is  $1\ \text{mm}$ . Let us call  $\Omega$  the center of the Ranvier node. When the AP is present at this node, we can model it as a  $6\ \mu\text{m}$  diameter circle, perpendicular to the axon axis, with a positive charge  $+q$  at its center ( $\Omega$ ) and a negative charge  $-q$  spread on the circle. The potential created at a point  $M$  of the space by this AP can be approximated by:

$$V(M) = \frac{qa^2}{8\pi\epsilon_0\epsilon_r r^3} \left( 1 - \frac{3}{2} \sin^2 \psi \right) \quad (7)$$

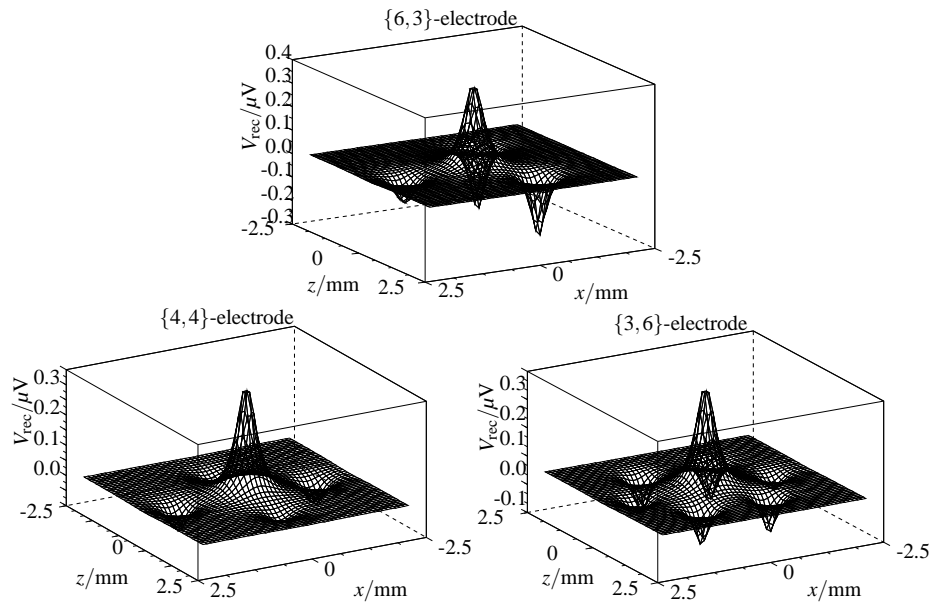
In this expression,  $a$  is the radius of the Ranvier node ( $3\ \mu\text{m}$ ),  $r$  is the distance between  $\Omega$  and  $M$ , while  $\psi$  is the angle between the axe of the axon and  $\overrightarrow{\Omega M}$ . This approximation, valid for  $r \gg a$ , is in good accordance with measurements. In particular, we can see that  $V(M)$  is negative for  $\psi = \pi/2$  [13, page 81]. Last,  $q$  can be easily estimated from the characteristics of the Ranvier node. For this study, we took  $q \simeq 20\ \text{fC}$  and  $\epsilon_r \simeq 80$ .

The model given by equation 7 was used to evaluate the sensitivity of the electrodes to AP occurring inside the nerve. Given the position of a single AP we can easily calculate the induced potential on each pole of the cuff, since they are very small. The figure 5 shows the voltage response of the three possible structures. The diameter of the cuff is  $2R = 3\ \text{mm}$  while the spacing between poles is  $d = R$ . The AP is located in a plane at  $20\%$  of  $R$  from the center of the electrode. Last, the effect of the wrapping of the electrodes is taken into account to calculate the position of the poles.

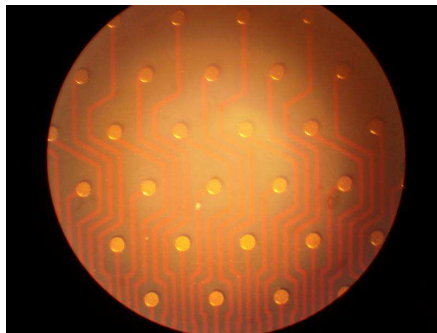
Obviously, the 7-pole (hexagonal) electrode exhibits the most isotropic sensitivity. We choose therefore this particular configuration for the prototype (fig. 6) and focus on it in the next sections of the paper.

### 4.2 Tripolar and heptapolar electrodes models

We have limited the next study to the comparison of the classical tripolar cuff with the heptapolar (hexagonal shape  $\{3,6\}$ ) electrode. The induced potential on each pole of the heptapolar electrode is calculated like above. For the tripolar cuff, we need to



**Fig. 5.** XZ-sensitivity of multipolar cuff electrodes for an AP source located in a  $y = 0.8R$  plane.



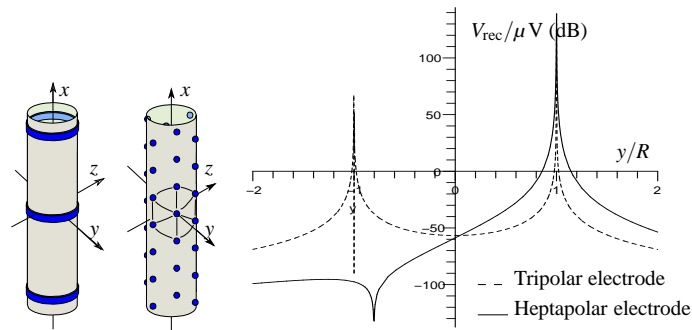
**Fig. 6.** Microphotograph of the {3,6} multipolar cuff electrode with connection routing.

average the potential on each ring. This lead to an elliptic integral we have solved using numerical methods.

In the following, we compare a tripolar cuff electrode, whose diameter is  $2R = 3 \text{ mm}$  and ring spacing is  $a = 4R$ , with one patch of the hexagonal cuff. To get comparable results, this hexagonal cuff has the same diameter ( $2R = 3 \text{ mm}$ ) and the spacing between poles is  $d = R$ .

For all the calculations, the coordinates were fixed as follow: the origin  $O$  is at the center of the cuff electrode. The  $Ox$  axis is the axis of the nerve (and, obviously, of the cuff). The  $Oy$  axis passes by the center of the considered patch (which is perpendicular to this axe). Last the  $Oz$  axe is placed to form a direct trihedron with  $Ox$  and  $Oy$ .

### 4.3 Internal sensitivity



**Fig. 7.** Radial sensitivities of a tripolar cuff electrode, and a bent hexagonal patch. The vertical axis is in  $\text{dB } \mu\text{V}$  and the unit for the horizontal axis is the radius  $R$  of the electrode.

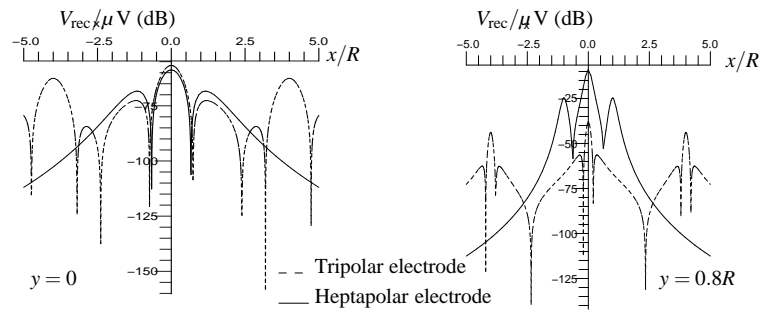
Figure 7 shows the radial sensitivities of the tripolar cuff electrode and a wrapped hexagonal patch of the multipolar electrode. The vertical axis is the value of  $V_{\text{rec}}$  (in  $\text{dB } \mu\text{V}$ ) calculated for an AP placed on the  $Oy$  axis, at abscissa  $yR$ . The graph shows clearly that while the sensitivity of the tripolar cuff is quasi constant on the section of the nerve, the sensitivity of the hexagonal patch is far higher (up to 30 dB) when considering an AP located between the center of the patch and the center of the cuff.

Figure 8 show the longitudinal sensitivities of the two considered electrodes. On the left hand-side of the figure, the AP is placed on the  $Ox$  axis, whereas on the other side, it is placed on a line, parallel to  $Ox$ , cutting  $Oy$  at abscissa  $0.8R$ . On this later figure, we can see an increase of sensitivity of the tripolar cuff in the vicinity of the rings, but this remains far lower than the sensitivity of any of the hexagonal patches.

### 4.4 External sensitivity

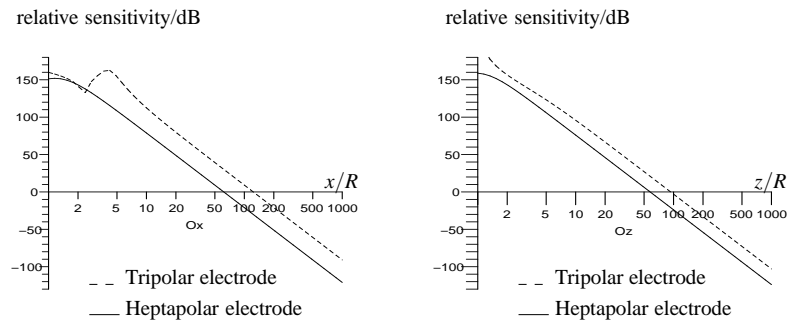
For the evaluation of the rejection of parasitic signals, we must first recall that EMG are also AP, creating the same kind of electric field. But, in this case, we cannot make any





**Fig. 8.** Longitudinal sensitivities on the axis of the nerve and on an off-center (80 % of  $R$ ) axis for a tripolar cuff electrode and a bent hexagonal patch. The vertical axis is in  $\text{dB } \mu\text{V}$  and the unit for the horizontal axis is the radius  $R$  of the electrode.

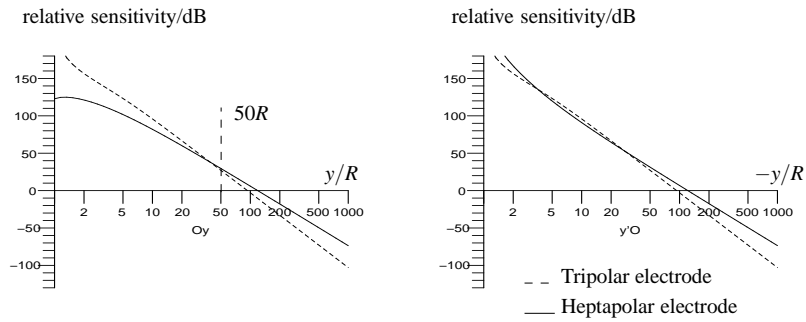
assumption on the value of  $\psi$  in the eq. (7). So, to evaluate the external sensitivity of electrodes, we chosen to use only a  $1/r^3$  model, unable to give voltages, but sufficient to compare the sensitivities of various electrodes.



**Fig. 9.** External relative sensitivity along the  $Ox$  and  $Oz$  axes for a tripolar cuff electrode and a bent hexagonal patch. The vertical axis is in  $\text{dB}$  and the unit for the horizontal axis is the radius  $R$  of the cuff.

The figure 9 show the external sensitivities of the two structures for an AP placed on the  $Ox$  or on the  $Oz$  axis of the electrode. As stated above, the quantity plotted is not a voltage, but is homogeneous to the reciprocal of the cube of a distance. Nevertheless, we can see on these two graphs that the hexagonal patches exhibit a better rejection of parasitic signals than the tripolar cuff. This improvement is of 32  $\text{dB}$  for  $Ox$  and 20  $\text{dB}$  for  $Oz$ .

The same study conducted along the  $Oy$  axis (figure 10) shows that the wrapped hexagonal patch has a sensitivity decreasing slowly along this  $Oy$  axis. In fact, the bent



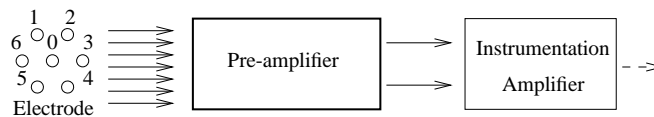
**Fig. 10.** External relative sensitivity along the two halves of the  $Oy$  axis for a tripolar cuff electrode and a bent hexagonal patch. The vertical axis is in dB and the unit for the horizontal axis is the radius  $R$  of the electrode.

hexagonal patch only begins to have larger sensitivity than the tripolar cuff for AP placed at more than fifty times the radius of the cuff, corresponding to approximately 7 cm. At this distance, the parasitic signal could be neglected in comparison to ENG signal.

## 5 ENG amplifier ASIC

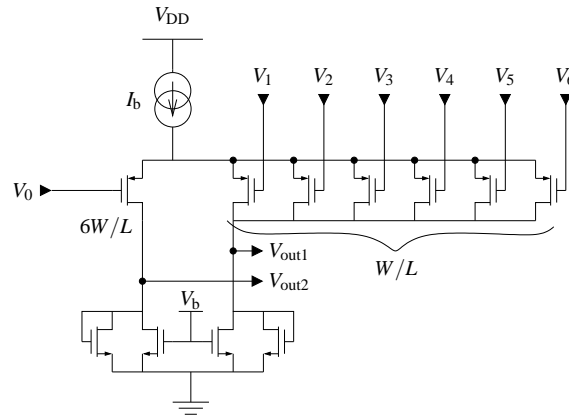
Because of the very low level of processed signals we propose to perform the maximum of signal processing as close as possible to the nerve. The more complex operations to be considered are those with the hexagonal electrode.

### 5.1 Overview



**Fig. 11.** Overview of the ASIC. Each channel is composed of a preamplifier and an instrumentation amplifier.

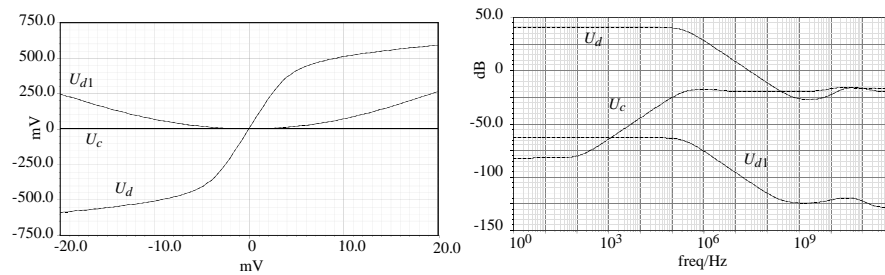
For this purpose, we have designed a seven channels ASIC. Each channel compute a weighted difference between the measurement point and the six closest surrounding points. This is done in the analog domain using the preamplifier shown on figure 12. This preamplifier is build around a differential pair whose negative input transistor was split into six transistors (six times smaller, of course). It has a voltage gain that is about 100 and it is followed by an instrumentation amplifier whose gain is configurable



**Fig. 12.** Seven input preamplifier performing the laplacian computation.

between 6 dB and 80 dB. Each channel is composed of a preamplifier followed by an instrumentation amplifier (fig. 11).

## 5.2 Simulation results



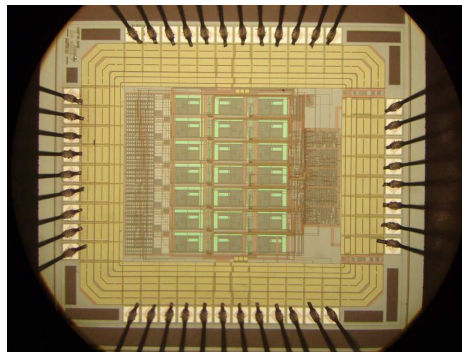
**Fig. 13.** Simulated static response and frequency response of the preamplifier.  $U_c$  stands for the common mode voltage (to be rejected),  $U_d$  is the component we want to amplify while  $U_{d1}$  is a parasitic differential voltage.

This circuit was designed to give an input-referred noise below  $1 \mu V_{\text{rms}}$ , a CMMR above 60 dB and a sufficient gain, i.e greater than 60 dB ; all these parameters in the bandwidth of interest ( $1 \text{ Hz} \leq f \leq 3 \text{ kHz}$ ). The performances expected for this amplifier are given in table 1 (the noise is measured in the band 1 Hz-3 kHz).

A Microphotograph of the fabricated circuit is presented Fig. 14. This circuit was designed in CMOS AMS  $0.35\text{-}\mu\text{m}$  technology and the prototype is currently under test.

**Table 1.** Amplifier characteristics (simulation).

Active area (7 channels)	1.16mm <sup>2</sup>
Supply voltage	3.3 V
DC Current (Preamp)	20μA
Voltage gain (Preamp)	100 (40 dB)
CMRR (Preamp)	80 dB (10 kHz)
Voltage gain (Inst amp)	$2 \leq G \leq 10000$
CMRR (Full amp)	80 dB (10 kHz)
Input-ref. noise (Preamp)	0.672μV RMS
Input-ref. noise (Full amp)	0.677μV RMS
Bandwidth (Full amp)	76 kHz



**Fig. 14.** Microphotograph of the seven-channel prototype.

## 6 Conclusion and perspectives

We have presented here a method to build multipolar cuff electrodes and how to extract useful informations from the multiple channels. Although numerical investigations are still necessary to an exhaustive comparison of multipolar structures, the comparison between the classical tripolar cuff electrode for ENG recording and a multipolar electrode has shown that this new type of the design is very promising. In every simulation, multipolar electrodes prove to be more sensitive to sources located inside the nerve, and in almost every case they show better far source rejection.

We hope the improvement of the recorded signal given by this new design will allow the use of signal processing techniques such as source separation. Then, multipolar configurations could make it possible to estimate more precise parameters like the speed and the direction of propagation of the AP [4, 14].

## References

1. Djilas, M., Azevedo Coste, C., Yoshida, K., Cathébras, G.: Interpretation of ENG signal for FES closed-loop control. In: IFESS'06: 11th Annual Conference of the International Functional Electrical Stimulation Society, Miyagi-Zao, Japan (12-15 September 2006) 85–87
2. Ramachandran, A., Sacristan, J., Lago, N., Dörge, T., Osès, M., Koch, K., Hoffmann, K.: Multipolar cuff electrodes with integrated pre-amplifier & filter to interface peripheral nerves for FES application. In: 10th Annual Conference of the International FES Society, Montreal, Canada (July 2005)
3. Winter, J., Rahal, M., Taylor, N., Donaldson, N., Struijk, J.: Improved spatial filtering of ENG signals using a multielectrode nerve cuff. In: 5th Annual Conference of the International Functional Electrical Stimulation Society, Aalborg, Denmark (June 2000)
4. Taylor, J., Donaldson, N., Winter, J.: Multiple-electrode nerve cuffs for low-velocity and velocity-selective neural recording. *Medical and Biological Engineering and Computing* **42**(5) (September 2004) 634–643
5. Haugland, M.K., Hoffer, J.A., Sinkjaer, T.: Skin contact force information in sensory nerve signals recorded by implanted cuff electrodes. *IEEE Transactions on Rehabilitation Engineering* **2**(1) (1994) 18–28
6. Jensen, W., Sinkjaer, T., Sepulveda, F.: Improving signal reliability for on-line joint angle estimation from nerve cuff recordings of muscle afferents. *IEEE Transactions on Neural Systems and Rehabilitation Engineering* **10**(3) (September 2002) 133–139
7. Andreassen, L.N.S., Struijk, J.J.: Signal strength versus cuff length in nerve cuff electrode recordings. **49**(9) (September 2002) 1045–1050
8. Struijk, J.J., Thomsen, M.: Tripolar nerve cuff recording: stimulus artifact, EMG and the recorded nerve signal. In: *Engineering in Medicine and Biology Society, 1995. IEEE 17th Annual Conference. Volume 2.*, Montreal, Que. (September 20–23, 1995) 1105–1106
9. Pflaum, C., Riso, R.R., Wiesspeiner, G.: Performance of alternative amplifier configurations for tripolar nerve cuff recorded ENG. In: *Engineering in Medicine and Biology Society, 1996. Bridging Disciplines for Biomedicine. Proceedings of the 18th Annual International Conference of the IEEE. Volume 1.*, Amsterdam (October 31–November 3, 1996) 375–376
10. Demosthenous, A., Triantis, I.F.: An adaptive ENG amplifier for tripolar cuff electrodes. **40**(2) (February 2005) 412–421

11. Weisstein, E.W.: Tessellation. From MathWorld—A Wolfram Web Resource (2002) <http://mathworld.wolfram.com/Tessellation.html>.
12. Gonzales, R.C., Woods, R.E.: Digital Image Processing. Addison-Wesley (1992)
13. Stein, R.B.: Nerve and Muscle. Plenum Press (1980)
14. Rieger, R., Schuettler, M., Pal, D., Clarke, C., Langlois, P., Taylor, J., Donaldson, N.: Very low-noise ENG amplifier system using CMOS technology. IEEE Transactions on Neural Systems and Rehabilitation Engineering **14**(4) (December 2006) 427–437