



**HAL**  
open science

# AquaPony: visualization and interpretation of phylogeographic information on phylogenetic trees

Bastien Cazaux, Guillaume Castel, Eric Rivals

## ► To cite this version:

Bastien Cazaux, Guillaume Castel, Eric Rivals. AquaPony: visualization and interpretation of phylogeographic information on phylogenetic trees. 2017. lirmm-01702654v1

**HAL Id: lirmm-01702654**

**<https://hal-lirmm.ccsd.cnrs.fr/lirmm-01702654v1>**

Preprint submitted on 7 Feb 2018 (v1), last revised 31 Dec 2018 (v3)

**HAL** is a multi-disciplinary open access archive for the deposit and dissemination of scientific research documents, whether they are published or not. The documents may come from teaching and research institutions in France or abroad, or from public or private research centers.

L'archive ouverte pluridisciplinaire **HAL**, est destinée au dépôt et à la diffusion de documents scientifiques de niveau recherche, publiés ou non, émanant des établissements d'enseignement et de recherche français ou étrangers, des laboratoires publics ou privés.

# AquaPony: visualization and interpretation of phylogeographic information on phylogenetic trees

B. Cazaux, G. Castel, E. Rivals

February 7, 2018

**Affiliations:** B. Cazaux and E. Rivals, Laboratory of Informatics, Robotics and Microelectronics (LIRMM) and Institut de Biologie Computationnelle (IBC), Montpellier, France, *Email:* [bastien.cazaux@lirmm.fr](mailto:bastien.cazaux@lirmm.fr), [rivals@lirmm.fr](mailto:rivals@lirmm.fr); G. Castel, Centre de Biologie pour la Gestion des Populations (CBGP) and Institut de Biologie Computationnelle (IBC), Montpellier France, *Email:* [guillaume.castel@inra.fr](mailto:guillaume.castel@inra.fr).

**Abstract:** The visualization and interpretation of evolutionary spatiotemporal scenarios is broadly and increasingly used in infectious disease research, ecology, or agronomy. Using probabilistic frameworks, well-known tools can infer from molecular data ancestral traits for internal nodes in a phylogeny, and numerous phylogenetic rendering tools can display such evolutionary trees. However, visualizing such ancestral information and its uncertainty on the tree remains tedious. For instance, ancestral nodes can be associated to several geographical annotations with close probabilities and thus, several migration or transmission scenarios exist. We expose a web-based tool, named AquaPony, that facilitates such operations. Given an evolutionary tree with geographic annotations, the user can easily control the display of ancestral information on the entire tree or a subtree, and can view alternative phylogeographic scenarios along a branch according to a chosen uncertainty threshold. AquaPony interactively visualizes the tree and eases the objective interpretation of evolutionary scenarios. AquaPony's implementation makes it highly responsive to user interaction, which instantaneously update the tree visualizations even for large trees (which can be exported as image files). AquaPony is freely usable at [AquaPony url](#).

## 1 Introduction

Phylogeography seeks to infer jointly the spatial and temporal dynamics of species evolution. From genomic data and the current geographical location of extant species, software like BEAST (Drummond et al. 2012) can infer the relationships between these species, in the form of a phylogenetic tree, and probable locations of ancestral species. Other discrete or continuous phenotypic traits are also amenable to ancestral inference using probabilistic methods, e.g. MrBayes (Ronquist and Huelsenbeck, 2003), Lamarc (Kuhner 2006), etc. For a discrete trait, one gets for each internal node the probability of each possible state. The evolution of a discrete trait along time, along a branch of the tree, makes up a *scenario*. Considering the geographical location as example trait, its evolution indicates a migration scenario (e.g. for plants or animals) or a dissemination scenario (e.g. for viruses and other parasites).

The visualization and interpretation of spatiotemporal scenarios is widely used in infectious disease research, in ecology, for biodiversity conservation policy, or in agronomy. Despite numerous methods for inferring ancestral traits in phylogenies, development on interfaces that help the interpretation of trait-annotated phylogenies is still needed (Bielejec et al. 2011, Chevenet et al, 2013), since some tasks remain difficult. Notably, the interpretation of evolutionary scenarios must account for the uncertainty of possible alternative scenarios. Often, only the *optimal* scenario is considered and displayed, even if *sub-optimal* scenarios may have a probability that is very close to that of the optimal scenario. It is thus risky to based the interpretation solely on the most probable location. Currently, this information on the uncertainty of ancestral traits is difficult to manipulate and to display with most currently available graphical user interfaces, especially on large phylogenetic trees. Comparing alternative scenarios with several probable locations at several ancestral nodes is even more complicated.

Here, we present a tool, named AquaPony (AP for short), which aids such manipulations, visualizations and the interpretation of evolutionary scenarios. It permits an easy selection and display of uncertain trait information at ancestral nodes in the phylogeny, and allows comparing alternative scenarios of distinct probabilities on ancestral traits, leading to the current state of a leaf or group of leaves. AP provides a dynamic and efficient interface implemented as a lightweight web-browser (and thus platform-independent) application.

## 2 Software description and main features

AP takes as input an evolutionary trees, whose nodes are annotated with some inferred traits. It typically accepts BEAST output and the like. For simplicity, let us consider geographical locations as the trait of interest: each node has a posterior probability for each location. The Newick input file is first parsed to extract annotations and display the tree. An AP screenshot is shown Figure 1. The user can select, update, and visualize annotation of interest through the *List of Annotations* and *Annotation* panels. Given chosen options, AP will display the tree (*Leading Figure* panel), and some subtree chosen by the user (*Secondary Figure* panel). When the user selects any node or leaf, and asks for its scenarios, the *Scenarios* panel opens up to display two alternatives. Any figure can then be saved as an external graphics for later use.

1. The *List of Annotations* displays the traits obtained by parsing the input as colored items. The user selects some traits for visualization on the tree by drag-and-dropping them to a field of the *Annotation panel*, but can also create group of annotations, and update the annotations in the Newick file (which can be saved in a new file). Importantly, the interface allows pointing each node on the tree visualization to get its unique ID and vice versa (ID button).
2. The *Annotations* panel contains fields to control display (*Branch*, *Pie chart*, *Min Max disk*, *Leaf color group*). Dropping a trait in the *Branch* field will trigger its visualization in the *Leading* and *Secondary* figures. Similarly, choosing instead instead the *Leaf color* field, colors the groups of leaves with identical trait in the color of its state.
3. The two figure panels offers a dynamically linked, whole tree and subtree visualizations: any changes is made on both trees. For example, putting the branch support (bootstrap or posterior probability) trait on *Min-Max disk* triggers the plot of a colored bullet on each node whose support is either very high enough or too low (by setting two thresholds). Similarly, putting the location probabilities on the *Pie chart* field plots a pie chart at each node having several states whose probabilities lie above a threshold. This enables spotting which nodes have several plausible alternative locations, and thus alternative scenarios. It materializes the uncertainty of ancestral annotations on the figures.
4. Finally the *Scenarios* panel displays two alternative phylogeographic scenarios upon selection of a leaf or group of leaves in the tree. The scenarios are shown as multi-color horizontal bars with the associated time scale. Above, the list of all ancestral nodes along the path are shown (left to right) with all possible trait states (on top of each other) and their probability provided the latter are above a threshold. The user interactively selects the trait states for the alternative, suboptimal scenario, which are immediately reflected in the figure below. Comparing the trait states for a node is easy since probabilities are shown. For comparing the scenarios we compute a score that combines the probabilities of their trait states, and the scores of both scenarios are displayed right of them (with their relative differences). For instance in Figure 1, direct dissemination from Carribean Islands to South America (as suggested by (Walimbe et al. 2014)) is a better scenario than a passage through USA. Beyond visualization, the score is an objective measure to compare and prioritize alternative scenarios, which can be almost equiprobable. This novel feature helps deciding among alternatives and discarding scenarios that do not comply with e.g. other independent evolutionary information or geographical constraints.

### Material

The phylogenetic tree shown in Figure 1 has 269 leafs and represents Global phylogeography of Dengue type 1 virus as described in (Walimbe et al. 2014). The Ancestral geographic locations of internal nodes were inferred

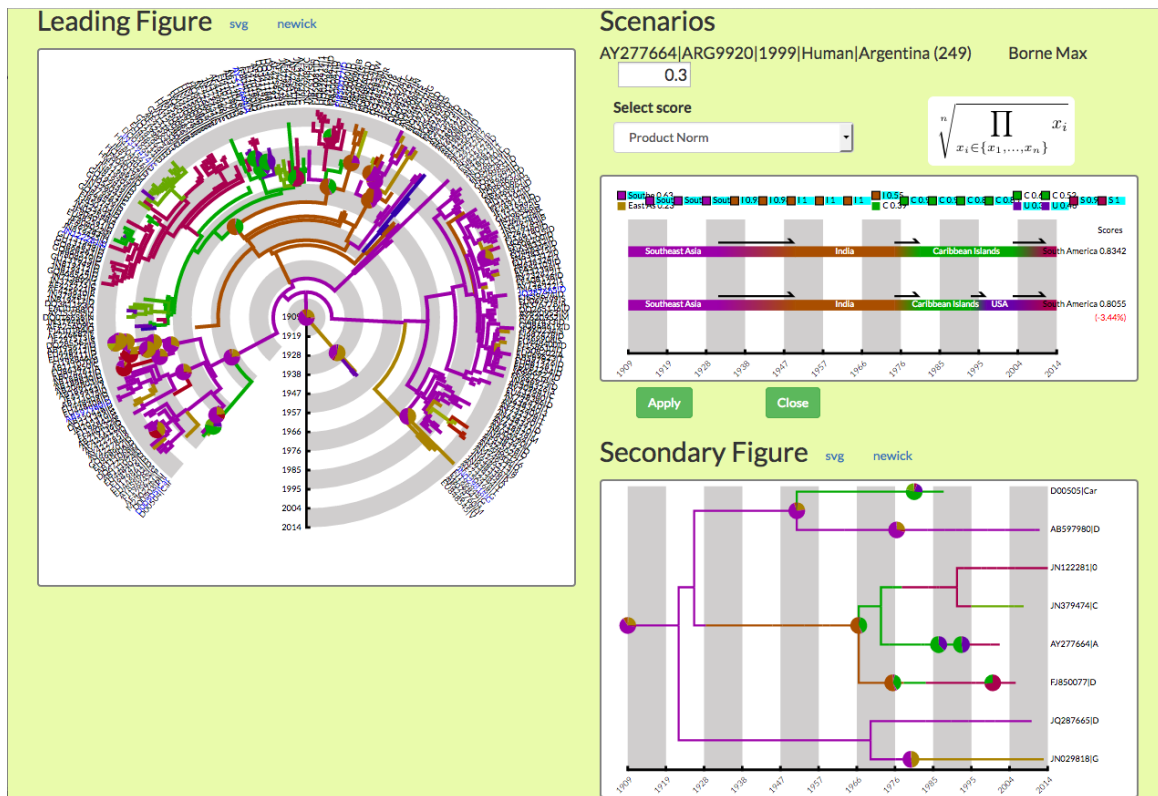


Figure 1: AP interface showing the *Leading figure*, *Secondary figure*, and the *Scenarios* panels. Tree from (Walimbe et al. 2014). The *Scenarios* panel show the two most probable transmission scenarios of dengue virus from the root of the tree until the chosen leaf. The scores at the right of each scenario indicate that both alternatives are almost equally likely. Different formulas for the score are available.

using the BEAST 1.6.2 program (Drummond et al., 2012).

## Implementation

AP can be interactively used on the [ATGC](#) bioinformatics platform ([AquaPony url](#)) with a web browser (no installation needed). Its code source is freely available under Cecill Licence at [AquaPony source](#). Its implementation in JavaScript language makes it highly responsive to user interaction and enables the instantaneous update of the tree visualizations. AP is fast enough for displaying very large trees (several thousands of leaves). The computation remains on the user side and does not have to wait for an eventually busy webserver. Thus, AP can be easily incorporated and reused in other web-based applications without any sophisticated installation. All figures can be saved in a flexible image format ([SVG](#)) – many tools like InkScape can transform SVG into various image formats like jpg or png. The original tree annotations can be modified, grouped, selected, and the user can update the input tree and save into a [Newick](#) formatted file for later reuse.

## 3 Conclusion

AP is a focused, web-based application for interactive visualization of evolutionary trees and ancestral annotations, as well visual investigation of evolutionary scenarios for a trait of interest. AP is not an all-purposes tool for phylogeny visualization, for which numerous tools are already available. Its strength is to ease some precise manipulations that remain tedious with other tools. Especially, highlighting of uncertainty, and comparison of alternative phylo- or bio-geographical scenarios along a branch in the studied tree becomes effortless in AP. Its open source code allows for extensions and for new features. Including other types of tree formats like [phyloXML](#) would broaden the range of possible inputs and facilitate down analysis of other software for phylogenetic inference. The simultaneous visualization of more than two alternative scenarios is a possible addition. Clearly extension to visualization of evolutionary networks may be of broad interest.

## 4 Bibliography

1. Drummond, A.J., Rambaut, A., Shapiro, B., Pybus, O.G., 2005. Bayesian coalescent inference of past population dynamics from molecular sequences. *Mol. Biol. Evol.* 22, 1185–1192.
2. Drummond AJ, Suchard MA, Xie D, Rambaut A. 2012. Bayesian phylogenetics with BEAUti and the BEAST 1.7. *Mol Biol Evol.* 29(8):1969–1973.
3. Chevenet F, Brun C, Banuls AL, Jacq B and Christen R. 2006. TreeDyn: towards dynamic graphics and annotations for analyses of trees. *BMC Bioinformatics*, 7:439
4. Chevenet F, Croce O, Hebrard M, Christen R and Berry V ScripTree: scripting phylogenetic graphics *Bioinformatics* 2010 26(8):1125-1126
5. Ronquist, F., Huelsenbeck, J.P., 2003. MrBayes 3: Bayesian phylogenetic inference under mixed models. *Bioinformatics* 19, 1572–1574.
6. Mary K. Kuhner; LAMARC 2.0: maximum likelihood and Bayesian estimation of population parameters, *Bioinformatics* 2006 22(6):768–770, <https://doi.org/10.1093/bioinformatics/btk051>
7. Bielejec F, Rambaut A, Suchard MA, Lemey P. 2011. Spread: spatial phylogenetic reconstruction of evolutionary dynamics. *Bioinformatics* 27(20):2910–2912.
8. Walimbe AM, Lotankar M, Cecilia D, Cherian SS. 2014. Global phylogeography of Dengue type 1 and 2 viruses reveals the role of India. *Infection, Genetics and Evolution* 22 30-39

**Acknowledgements:** This work is supported by the Institut de Biologie Computationnelle ANR (ANR-11-BINF-0002). We are grateful to E. Jousselin and F. Chevenet for insightful comments.