



**HAL**  
open science

## A method of motion recognition based on electromyographic signals

Jing Luo, Chao Liu, Ying Feng, Chenguang Yang

► **To cite this version:**

Jing Luo, Chao Liu, Ying Feng, Chenguang Yang. A method of motion recognition based on electromyographic signals. *Advanced Robotics*, 2020, 34 (15), pp.976-984. 10.1080/01691864.2020.1750480 . lirmm-03771079

**HAL Id: lirmm-03771079**

**<https://hal-lirmm.ccsd.cnrs.fr/lirmm-03771079>**

Submitted on 7 Sep 2022

**HAL** is a multi-disciplinary open access archive for the deposit and dissemination of scientific research documents, whether they are published or not. The documents may come from teaching and research institutions in France or abroad, or from public or private research centers.

L'archive ouverte pluridisciplinaire **HAL**, est destinée au dépôt et à la diffusion de documents scientifiques de niveau recherche, publiés ou non, émanant des établissements d'enseignement et de recherche français ou étrangers, des laboratoires publics ou privés.

## FULL PAPER

### A method of motion recognition based on electromyographic signals

Jing Luo,<sup>a,b</sup> Chao Liu<sup>c</sup>, Ying Feng<sup>a</sup> and Chenguang Yang<sup>d\*</sup>

<sup>a</sup>School of Automation Science and Engineering, South China University of Technology, Guangzhou 510640, China;

<sup>b</sup>Department of Bioengineering, Imperial College of Science Technology and Medicine, London SW7 2AZ, UK;

<sup>c</sup>Department of Robotics, LIRMM, UMR5506, University of Montpellier-CNRS, 161 rue Ada, Montpellier 34095, France;

<sup>d</sup>Bristol Robotics Laboratory, University of the West of England, Bristol BS16 1QY, UK

(v1.0 released January 2013)

In a robot-assisted surgery, a skillful surgeon can perform the operation excellently through flexible wrist motions and rich experience. However, there are little researches about the relationship between the wrist motion and electromyography (EMG) signal of surgeon. To this end, we introduce a classification framework of wrist motion to recognize the common wrist motion of the surgeon based on EMG signals. Generally, surface EMG (sEMG) signal has been widely used in prosthetic hand control and medical clinical application. Hence, in this paper, we utilize sEMG signals to evaluate the wrist motions. Eight channels of sEMG signals are captured through a MYO armband from the forearm of the subject. Different kinds of features based on EMG signal, root-mean-square, waveform length, and autoregressive are used to recognize wrist motion through linear discriminant analysis method. We test the impacts on recognition performance from the different sEMG features and different sampling moving windows length. Experimental results have verified the recognition performance of the presented approach. It is validated that the RMS feature can achieve best recognition performance with all different sampling moving windows length in comparison with the WL feature and AR feature.

**Keywords:** motion recognition; electromyography signals; motion pattern

## 1. Introduction

As the development of control, information science and mechanism etc., robots provide more and more advantages in our life [1][2]. Especially, medical robots are widely utilized to the clinic operation, and rehabilitation [3][4]. In recent researches, electromyogram (EMG) signals are introduced to show the human's motor characteristics in the application of robots. In general, EMG signal implies the summation of motor unit action potentials from the human's muscle fiber [5][6]. Different muscles can generate various EMG signal for indicating the different motions. EMG signal has been widely utilized as the indicator of muscle activation [7], in EMG-based shared control for human-machine interaction [8][9], muscle signals powered wearable walking robots [10], and motion pattern recognition of human hand [11]. In this paper, we aim to recognize the wrist motion by using EMG signals and explore the impact on recognition performance by using different EMG-based features.

---

\*Corresponding author. Email: cyang@ieee.org

With the developments of sensor technology, computer science and human-machine interface, the EMG-related technologies are greatly enhanced, especially, surface electromyogram (sEMG) signals are contributed to the applications in various areas, such as motion patterns recognition, clinic application in medicine [12], and EMG-based human-machine interaction [13][14]. In a word, EMG-based techniques have great potential deserving research in our lives. However, the traditional capture technologies of EMG signals need to implant the EMG sensors into the skin. It has some limitations in practice. Compared with traditional capture technologies of EMG signals, the capture of sEMG signals just need some electrode sensors are attached to the skin without implantation under the skin. It is a very convenient way to collect sEMG signals. Since the EMG signals can be captured and decoded the patterns of muscle activation feasibly, it has led to increasing research upsurge in the world [15][16][17]. For a skillful surgeon, they can perform excellently the complex operation through their wrist motion and rich experience. Due to surgeons always keep a gesture of fingers close together when they hold the instruments, the movements of hand mainly depend on the motion of wrist. In this process, we take common wrist motion of surgeon into consideration and explore the relationship of these motions and EMG signals.

For motion recognition, it is crucial to select correct feature(s). Many significant achievements have been demonstrated that proper EMG-based feature can enhance the recognition performance of motion [18][19][20]. Generally, time-domain features and frequency-domain features are widely used in EMG-based motion classification. In [21], mean absolute values (MAV) method were used to extract the feature information for the purpose of evaluation of muscle synergies. In time-domain method, variable features of EMG signals could improve the accuracy of recognition for multiple finger motions [22]. In addition, multiple feature based on time-domain can make a difference in the aspects of enhancing the performance of classification. In [23], the authors utilized five different time-domain features to recognize the motion patterns and obtained a satisfactory experimental results. Bhattacharya *et al.* developed a effective multi-feature selection algorithm to detect the motion patterns and to control limb prostheses [24]. Additionally, the researchers are very interested in selection of different kinds of EMG signals' feature. Moreover, in [25], in order to improve the recognition accuracy of lower limb motion, a top and slope method was used to characterize the sEMG signal's feature. It is concluded that EMG-based characteristics, such as time-domain features, can be used as the feature to indicate the characteristics of EMG signals and can be utilized in the human-machine application as an indicator.

After obtaining the proper features of EMG signal, the key work is how to recognize the motion patterns by using these features. For the purpose of enhancing the classification accuracy of the motion, more and more researchers have proposed many feasible approaches in recent decades [26][27]. In [28], the authors proposed an integration method of Bayesian and neural networks (NN) to classify the motions for human-robot interfaces. The authors developed an optimized NN method to evaluate motion pattern by using EMG signals [29]. As the development of fuzzy theory, some achievements of fuzzy logic were developed to deal with the problems of motion patterns classification [30]. Since the difference of human subjects' characteristics, some researchers try to recognize the motion from the aspects of independent of subjects. In [31], a decoding model method was used to decode the patterns information of wrist and hand motions. Recently, deep-learning techniques have promoted the development of machine learning applications, and EMG-based area is no exception. For example, the deep learning approach was utilized to classify the sleep stage [32]. In [33], a novel convolutional neural network (CNN) was proposed to decode the wrist movements based on the characteristics of raw EMG signals. Indeed, these methods are used to recognize the motion patterns successfully. However, those significant achievements are still hard to be utilized in real applications. In this work, we explore to find a simple framework to for recognizing the motion patterns in order to improve the analysis efficiency. Based on the inspiration of above-mentioned feature selection and motion recognition approaches [34][35], we develop a framework to explore the relationship between wrist motion patterns and EMG signals for surgeon.

Specially, the main contribution can be concluded as below.

- A recognition framework of wrist motion for surgeon is developed to integrate linear discriminant analysis (LDA) method with three different EMG-based features.
- An analysis of influence of different sEMG signals' feature and different sampling moving window length for recognizing the motions of surgeon. The proposed framework can effectively recognized the wrist motion patterns by a simple classifier.

The rest paper's structure is organized as following. Section 2 presents the presented approach in terms of data preprocessing, feature selection, and classification. Section 3 validates the developed approach and details the results in terms of the influence of different feature and sampling moving window length for the motion recognition. Section 4 concludes the conclusion and provides an outlook of the future of motion recognition.

## 2. Proposed Method

In this paper, four different kinds of typical wrist motions for surgeon are considered. This work aims to explore the relationship of wrist motion patterns and EMG signals. As shown in Fig. 1, it shows the proposed framework of the wrist motions recognition for surgeon. Specially, it mainly includes signals preprocessing module and motion recognition module. As shown in the figure, it should be preprocessed the captured raw sEMG signals at first, then we extract the sEMG signals feature to classify the wrist motion. Through this framework, we can recognize the specific motion pattern of surgeon.

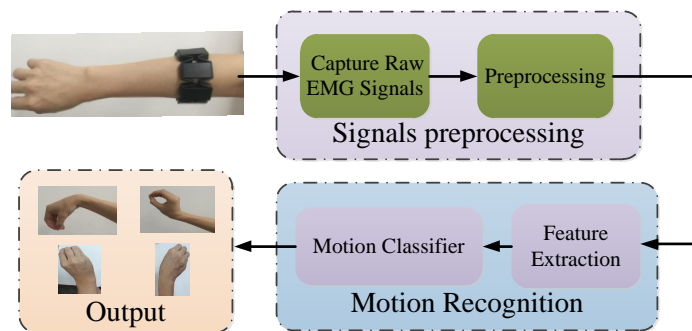


Figure 1. The wrist motion framework.

### 2.1 Data Preprocessing and feature selection

As shown in Fig. 2, it is seen that a human subject wears MYO armband on subject's forearm to capture sEMG signals with 200 Herz. The MYO armband has eight detection channels. Correspondingly, we can obtain 8-channel sEMG signals. In this paper, four common wrist motions of surgeon are considered, therefore we define the different wrist motion  $M$  as below:

$$M = \begin{cases} M1 & \text{wrist flexion.} \\ M2 & \text{wrist extension.} \\ M3 & \text{wrist to the left.} \\ M4 & \text{wrist to the right.} \end{cases} \quad (1)$$

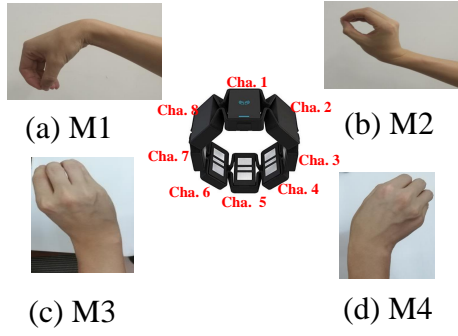


Figure 2. Four kinds of wrist motions.

We utilize root mean square (RMS) feature [36][37], waveform length (WL) feature [38][23] and autoregressive model (AR) feature [39][40] as the feature of sEMG signals. Representations of RMS, WL, and AR can be represented as below.

$$RMS(j, k) = \sqrt{\frac{1}{L_{rms}} \sum_{i=1}^{L_{rms}} x_i^2}. \tag{2}$$

where  $L_{rms}$  denotes the sampling moving window's length of RMS feature.  $x_i$  is the captured raw sEMG signals.  $RMS(j, k)$  is the feature value in  $j$ -th channel for the  $k$ -th sample.

$$WL(j, k) = \frac{1}{L_{wl}} \sum_{i=1}^{L_{wl}} \Delta x_i. \tag{3}$$

where  $\Delta x_i = x_i - x_{i-1}$ .  $L_{WL}$  denotes the sampling moving window's length of WL feature.  $WL(j, k)$  represents the feature value of WL in  $j$ -th channel for the  $k$ -th sample.

$$AR(j, k) = \frac{1}{L_{ar}} \sum_{i=1}^{\gamma_{ar}} a_i x_{k-i} + \varepsilon_k \tag{4}$$

where  $\gamma_{ar}$  is order of AR coefficients.  $a_i$  is the coefficients.  $\varepsilon_k$  denotes the residual white noise. We define  $L_{ar}$  is the sampling moving window's length of AR feature for the  $k$ -th sample.

Based on Eqs. (2)-(4), the feature of sEMG signals can be defined as

$$\mathbf{RMS} = [RMS1, RMS2, \dots, RMSj, \dots, RMS8] \tag{5}$$

$$\mathbf{WL} = [WL1, WL2, \dots, WLj, \dots, WL8] \tag{6}$$

$$\mathbf{AR} = [AR1, AR2, \dots, ARj, \dots, AR8] \tag{7}$$

where  $\mathbf{RMS}$  demote the RMS feature of sEMG signals.  $j = 1, 2, \dots, 8$  represent the sEMG signals' capture channel.  $\mathbf{WL}$  demote the WL feature of sEMG signals.  $\mathbf{AR}$  demote the RMS feature of sEMG signals.

As shown in Fig. 3, it can be seen that there are eight channels sEMG signals and their corresponding feature. Fig. 3 (a) indicates the characteristic of raw sEMG signals. Figs. 3 (b)-(d) are the AR, WL, and RMS feature of sEMG signals, respectively.

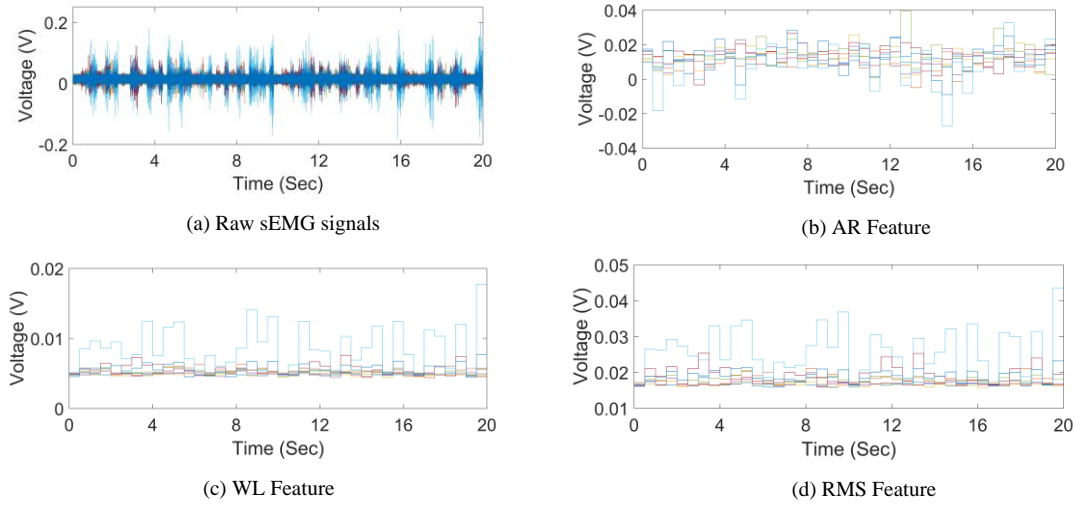


Figure 3. sEMG signals preprocessing.

Therefore, the input of the proposed framework can be defined as

$$\mathbf{I} = [\mathbf{F}_I, \mathbf{M}]^T \tag{8}$$

where  $\mathbf{F}_I = [\mathbf{RMS} \ \mathbf{WL} \ \mathbf{AR}]$ .  $\mathbf{M} = [M1 \ M2 \ M3 \ M4]$ .

### 2.2 Classification

In this classification section, LDA method is introduced to recognize the wrist motion with related to RMS feature, WL feature, and AR feature. As above mentioned,  $M_i = [M1, M2, M3, M4]$  is the wrist motion’s recognition results.  $F_I = [RMS, WL, AR]$  denote the sEMG signals’ feature.

Inspired by [41][42], posterior probability  $p(M_i|F)$  is presented as below:

$$p(M_i|F_I) = \frac{p(M_i)p(F_I|M_i)}{p(F_I)} \tag{9}$$

where  $p(F_I)$  denotes the prior probability of  $F_I$ . When we get the maximum of posterior probability  $p(M_i|F)_{max}$ , the recognized wrist motion  $M_i|_{p=p(M_i|F)_{max}}$  is determined.

$p(F_I|M_i)$  denotes the contingent probability. We assume that contingent probability  $p(F_I|M_i)$  obey the multivariate probability distribution. And one has

$$p(F_I|M_i) = \frac{1}{\sqrt{(2\pi)^r \det(C_m)}} \exp\left\{-\frac{1}{2}(F_I - \hat{\mu}_i)^T C_m^{-1} (F_I - \hat{\mu}_i)\right\} \tag{10}$$

Table 1. The experimental parameters.

Experiment	Experiment 1	Experiment 2
Size of training set	20000*8	20000*8
Size of testing set	500*8	400*8
Types of feature $F_I$	<i>RMS, WL, AR</i>	<i>RMS, WL, AR</i>
order of AR coefficients $\gamma_{ar}$	4	4
Size of moving window $L$	20, 50, 100, 500	20, 40, 50, 80, 100, 200

where  $r$  is the number of feature for sEMG signals.  $\hat{\mu}_i$  denotes the mean vector with related to  $M_i$ .  $C_m$  represents the covariance matrix of wrist motions  $M_1, M_2, M_3, M_4$ .

Take the logarithm of both sides on Eq. (10), the maximum of posterior probability  $p(K_i|F)_{max}$  can be determined. By using the linear discriminant function (LDF)  $\hat{\delta}(k)$  which is introduced as

$$\hat{\delta}(k) = F_I^T \hat{\mu}_g + \hat{c}_g \tag{11}$$

where  $\hat{\mu}_g = C_m^{-1} \hat{\mu}_k$ .  $\hat{c}_g = -\frac{1}{2} \hat{\mu}_k^T C_m^{-1} \hat{\mu}_k$

At last, the recognition results of wrist motion can be obtained after maximizing the LDF  $\hat{\delta}(k)$ .

### 3. Experiments and results

In order to verify the performance of the presented approach, four comparative experiments are performed. The experimental configuration is presented as below:

- *Hardware configuration.* MYO armband with 8 sensors (200 Hz) is used to capture the raw sEMG signals. A working station configures a i7-3770T CPU with 2.50GHz, 12 GB internal storage for the experiments.
- *Software environment.* MATLAB and Visual Studio 2013 are operated on Windows 7 operation system. MATLAB is used to analyse the experimental data. Visual Studio 2013 is utilized to capture sEMG signal through bluetooth communication with the MYO armband.

There are two healthy subjects with age 22-30 years old are taken part in the experiments. The subjects are requested to do the motions with maximal angle in a sequence of M1, M2, M3, and M4. It is noted that the position of MYO for the 2 subjects is same. They are asked to finish every wrist motion two times within two minutes. The subjects are informed of the details of the experiment in advance. In the process of experiments, they are requested to take a break with thirty minutes. Three features *RMS, WL, AR* are tested to estimate the recognition performance for each motion. Furthermore, we discuss the influence of different length of sampling moving window. The experimental parameters are presented in Table 1.

For validating the effectiveness of the presented approach, accuracy (ACC) is introduced in this paper, it can presented as

$$ACC = \frac{Sum_{correct}}{Sum_{total}} \tag{12}$$

where  $Sum_{correct}$  is the number of correct recognized wrist motion.  $Sum_{total}$  denotes the total number of sampling data.

Table 2. Classification results of wrist motions with RMS feature, WL feature, and AR feature with moving window length  $L = 100$  in experiment 1.

Gesture/Feature	RMS	WL	AR
M1	0.8244	0.7843	0.4102
M2	0.8091	0.7435	0.3838
M3	0.7551	0.7219	0.4080
M4	0.7829	0.7194	0.3502

Table 3. Classification results of wrist motions with RMS feature, WL feature, and AR feature with moving window length  $L = 50$  in experiment 2.

Gesture/Feature	RMS	WL	AR
M1	0.8325	0.7550	0.4010
M2	0.7944	0.7194	0.3374
M3	0.81331	0.7188	0.3176
M4	0.7904	0.7301	0.3466

### 3.1 Influence of different feature

In the experiments, we test the influence of different feature using RMS, WL, and AR.

Fig. 4 and Table 2 show the experimental results of experiment 1 with sampling moving window length  $L = 100$ . The recognition accuracies of M1 and M2 are almost the same when using RMS feature. It can be seen that RMS feature achieves the best recognized performance for each wrist motion. The performance of recognition is the worse when using WL feature. AR feature has the worst performance of recognition in comparison with those of RMS feature and WL feature.

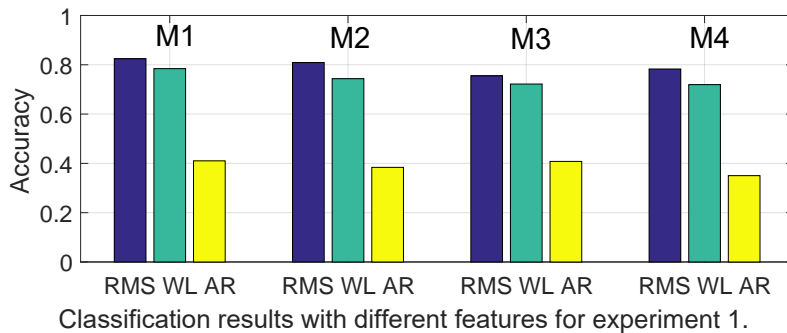


Figure 4. Classification results of wrist motions with different features for experiment 1.

In experiment 2, Table 3 and Fig. 5 show the classification results. It can be seen that the classification result for M1 is best with RMS feature, WL feature, and AR feature. The recognition accuracies of M2 and M4 are almost the same when using RMS feature and AR feature. For each wrist motion, it can be concluded that the RMS feature achieves the highest recognition accuracy.

Taken together, classification accuracy is the highest with RMS feature in Figs. 4-5. In addition, the recognition performance is different when the subjects perform a same motion. For example, it can be seen that the recognition performance of experiment 2 is better than that of experiment 1 according to the experimental results from Tables 2-3 for wrist motion M3. That is to say, the strength of sEMG signals of experiment 2 is stronger than that of experiment 1 for Motion M3 since of the muscle activation is different between two different subjects.



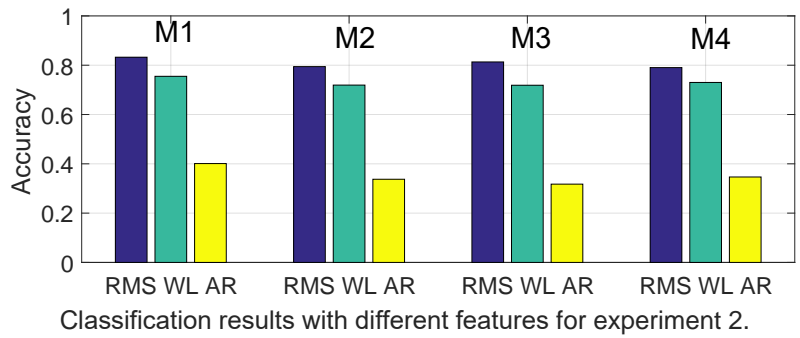


Figure 5. Classification results of wrist motions with different features for experiment 2.

### 3.2 Influence of different moving window length

In this section, we mainly analyse the influence of different moving window for the recognition performance.

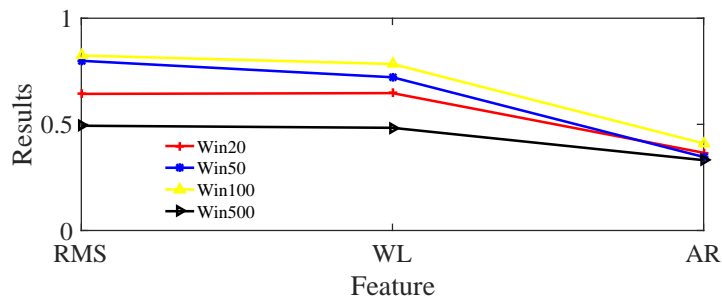


Figure 6. Accuracy of M1 by using different feature for experiment 3.

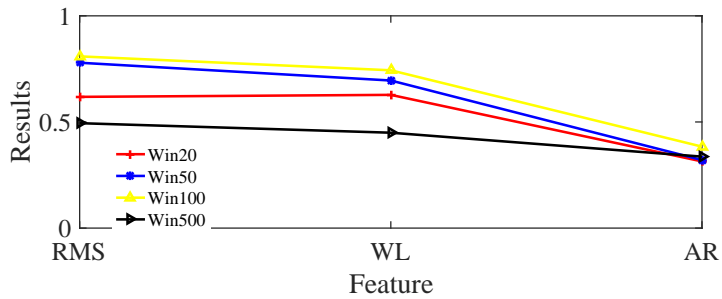


Figure 7. Accuracy of M2 by using different feature for experiment 3.

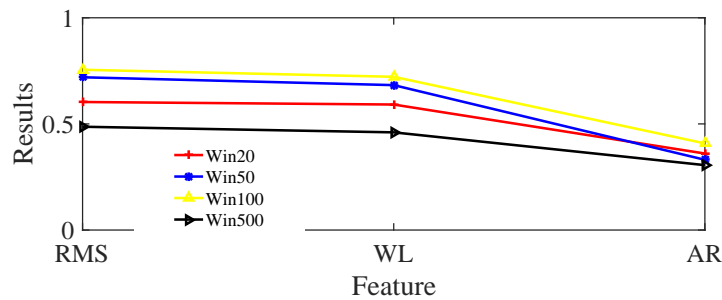


Figure 8. Accuracy of M3 by using different feature for experiment 3.

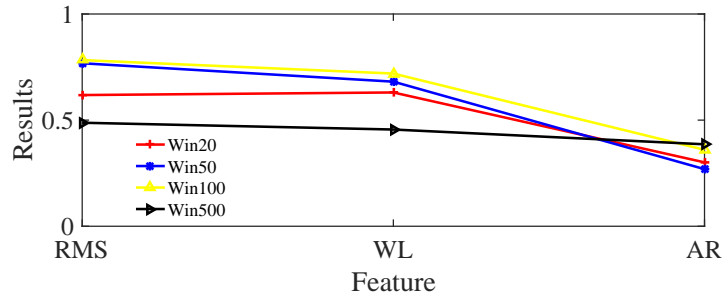


Figure 9. Accuracy of M4 by using different feature for experiment 3.

In experiment 3, we verify the recognition performance with moving window length  $L = 20, L = 50, L = 100,$  and  $L = 500$ . Figs. 6-9 show the recognition accuracy of different moving window length for each wrist motion. For wrist motions M1-M4, the recognition accuracies are highest when the length of moving window is 100 no matter which feature is used. However, the performance is worst when the moving window length is 500. In this sense, the accuracy gets higher as the length of moving window increases when  $20 \leq L \leq 100$ . It can be seen that the recognition performance with RMS feature is best when using RMS feature and WL feature for M1-M4.

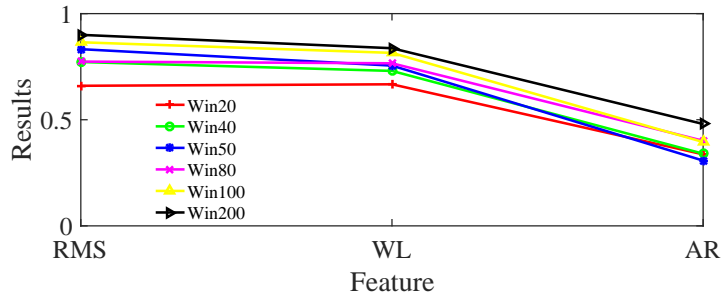


Figure 10. Accuracy of M1 by using different feature for experiment 4.

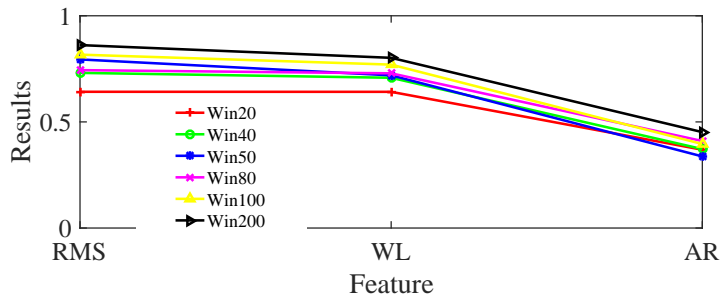


Figure 11. Accuracy of M2 by using different feature for experiment 4.

For experiment 4, the recognition performance with moving window length  $L = 200$  is best in comparison with the moving window length are  $L = 20, 40, 50, 80,$  and  $100$ . When the moving window is determined, the recognized accuracy are highest when using the RMS feature. In this experiment, it can be seen that the accuracy is higher as the moving window length increases. In this sense, the accuracy has a relative positive correlation with the length of moving window for M1-M4 when  $20 \leq L \leq 200$ .

Based on the above-mentioned analysis, it is essential to analyse the impacts of the length of moving window and different feature of sEMG signals. From the experimental results of experiments 1-4, it can be concluded that the recognition performance is best when using RMS

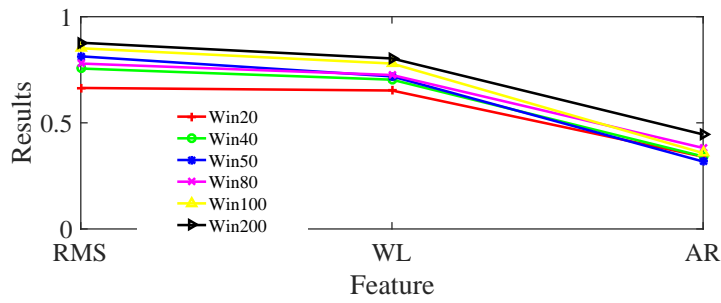


Figure 12. Accuracy of M3 by using different feature for experiment 4.

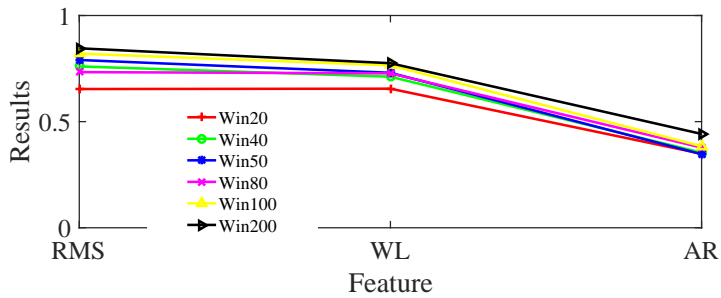


Figure 13. Accuracy of M4 by using different feature for experiment 4.

feature. The influence of different length of moving window should be analysed according to the actual sEMG signals and its feature. It is noted is that the optimal window length changes from person to person, and also a qualitative observation is that the best or most efficient window length cannot be too small neither too big.

#### 4. Conclusion and discussion

We develop a wrist motion recognition framework based on sEMG signals in this work. RMS, WL, and AR are used as the feature of sEMG signals. These features are used as the input sample to train the classifier by using the LDA approach to recognize different wrist motions. Four comparative experiments are performed to validate the effectiveness of the developed method. The experimental results demonstrated that the proposed framework with RMS feature can obtain the best recognized performance in comparison with that of WL feature and AR feature. Furthermore, there is a relative positive correlation between the length of sampling moving window and the recognition accuracy within certain range. In this sense, the researcher can choose a relative greater length of sampling moving window for motion recognition.

Although MYO software provides the own function to detect the hand gesture, but it is very different between its basic motions of MYO’s demo and the common wrist motions of surgeon. Since surgeon always keeps a gesture of fingers close together when they hold the instruments, the movements of hand mainly depend on the motion of wrist. We mainly consider four common motions  $M1$ ,  $M2$ ,  $M3$ , and  $M4$ . Actually, other wrist motions can be recognized. In this work, we collect the common wrist motions of surgeon, and extract the EMG signals in a self-made way, so the size of sample data is limited. In this sense, in future work, we will consider the larger size of sample data and achieve a better performance, i.e. accuracy and variance. Furthermore, more different feature extraction algorithms and integration of those feature extraction algorithms would be considered to reflect the robustness of sEMG signals’ feature. Due to the sampling data sets become larger and larger, some dimensional reduction techniques and deep learning method will be introduced to deal with the problem of data preprocessing. Since the characteristic of sEMG signals is different from person to person, the difference of individuals will be estimated in

statistics, we will add the different motions of more subjects and test the developed approach in the extensively recognized data set [43]. In addition, multimodal information and the application of EMG should be considered in more actual areas, such as [44][45][46][47].

## Acknowledgements

This work was supported in part by the National Natural Science Foundation of China under Grant 61861136009, Grant 61811530281, in part by the UK-China Joint Research and Innovation Partnership Fund Ph.D. Placement Programme 201806150139, and in part by the CNRS-NSFC Grants PRC2104.

## References

- [1] Wu X, Li Z, Kan Z, Gao H. Reference trajectory reshaping optimization and control of robotic exoskeletons for human-robot co-manipulation. *IEEE transactions on cybernetics*. 2019;.
- [2] He W, Yiting D. Adaptive fuzzy neural network control for a constrained robot using impedance learning. *IEEE Transactions on Neural Networks and Learning Systems*. 2019;29(4):1174–1186.
- [3] Li Z, Li J, Zhao S, Yuan Y, Kang Y, Chen CP. Adaptive neural control of a kinematically redundant exoskeleton robot using brain-machine interfaces. *IEEE transactions on neural networks and learning systems*. 2019;30(12):3558–3571.
- [4] Wu X, Li Z. Cooperative manipulation of wearable dual-arm exoskeletons using force communication between partners. *IEEE Transactions on Industrial Electronics*. 2019;.
- [5] Farina D, Holobar A, Merletti R, Enoka RM. Decoding the neural drive to muscles from the surface electromyogram. *Clinical neurophysiology*. 2010;121(10):1616–1623.
- [6] Day SJ, Hulliger M. Experimental simulation of cat electromyogram: evidence for algebraic summation of motor-unit action-potential trains. *Journal of Neurophysiology*. 2001;86(5):2144–2158.
- [7] Luo J, Yang C, Li Q, Wang M. A task learning mechanism for the telerobots. *International Journal of Humanoid Robotics*. 2019;:1950009.
- [8] Luo J, Yang C, Wang N, Wang M. Enhanced teleoperation performance using hybrid control and virtual fixture. *International Journal of Systems Science*. 2019;50(3):451–462.
- [9] Luo J, Lin Z, Li Y, Yang C. A teleoperation framework for mobile robots based on shared control. *IEEE Robotics and Automation Letters*. 2019;5(2):377–384.
- [10] Li Z, Yuan Y, Luo L, Su W, Zhao K, Xu C, Huang J, Pi M. Hybrid brain/muscle signals powered wearable walking exoskeleton enhancing motor ability in climbing stairs activity. *IEEE Transactions on Medical Robotics and Bionics*. 2019;.
- [11] Li Z, Wang B, Yang C, Xie Q, Su CY. Boosting-based emg patterns classification scheme for robustness enhancement. *IEEE Journal of Biomedical and Health Informatics*. 2013;17(3):545–552.
- [12] Li Z, Wang B, Sun F, Yang C, Xie Q, Zhang W. semg-based joint force control for an upper-limb power-assist exoskeleton robot. *IEEE journal of biomedical and health informatics*. 2013;18(3):1043–1050.
- [13] Wang B, Li Z, Ye W, Xie Q. Development of human-machine interface for teleoperation of a mobile manipulator. *International Journal of Control, Automation and Systems*. 2012;10(6):1225–1231.
- [14] Yang C, Luo J, Pan Y, Liu Z, Su CY. Personalized variable gain control with tremor attenuation for robot teleoperation. *IEEE Transactions on Systems, Man, and Cybernetics: Systems*. 2017;.
- [15] Yap HK, Ang BW, Lim JH, Goh JC, Yeow CH. A fabric-regulated soft robotic glove with user intent detection using emg and rfid for hand assistive application. In: 2016 IEEE International Conference on Robotics and Automation (ICRA). IEEE. 2016. p. 3537–3542.
- [16] Sturma A, Hrubby LA, Prahm C, Mayer JA, Aszmann OC. Rehabilitation of upper extremity nerve injuries using surface emg biofeedback: Protocols for clinical application. *Frontiers in neuroscience*. 2018;12:906.
- [17] Zahabi M, White MM, Zhang W, Winslow AT, Zhang F, Huang H, Kaber DB. Application of cognitive task performance modeling for assessing usability of transradial prostheses. *IEEE Transactions on Human-Machine Systems*. 2019;.

- [18] Zardoshti-Kermani M, Wheeler BC, Badie K, Hashemi RM. Emg feature evaluation for movement control of upper extremity prostheses. *IEEE Transactions on Rehabilitation Engineering*. 1995; 3(4):324–333.
- [19] Phinyomark A, Quaine F, Charbonnier S, Serviere C, Tarpin-Bernard F, Laurillau Y. Emg feature evaluation for improving myoelectric pattern recognition robustness. *Expert Systems with applications*. 2013;40(12):4832–4840.
- [20] Camargo J, Young A. Feature selection and non-linear classifiers: Effects on simultaneous motion recognition in upper limb. *IEEE Transactions on Neural Systems and Rehabilitation Engineering*. 2019;27(4):743–750.
- [21] Atoufi B, Kamavuako EN, Hudgins B, Englehart K. Classification of hand and wrist tasks of unknown force levels using muscle synergies. In: *Engineering in medicine and biology society (embc), 2015 37th annual international conference of the IEEE*. IEEE. 2015. p. 1663–1666.
- [22] Yang D, Yang W, Huang Q, Liu H. Classification of multiple finger motions during dynamic upper limb movements. *IEEE journal of biomedical and health informatics*. 2017;21(1):134–141.
- [23] Arief Z, Sulistijono IA, Ardiansyah RA. Comparison of five time series emg features extractions using myo armband. In: *2015 international electronics symposium (ies)*. IEEE. 2015. p. 11–14.
- [24] Bhattacharya A, Sarkar A, Basak P. Time domain multi-feature extraction and classification of human hand movements using surface emg. In: *Advanced computing and communication systems (icaccs), 2017 4th international conference on*. IEEE. 2017. p. 1–5.
- [25] Ryu J, Lee BH, Kim DH. semg signal-based lower limb human motion detection using a top and slope feature extraction algorithm. *IEEE Signal Processing Letters*. 2017;24(7):929–932.
- [26] Fang Y, Liu H, Li G, Zhu X. A multichannel surface emg system for hand motion recognition. *International Journal of Humanoid Robotics*. 2015;12(02):1550011.
- [27] Qi J, Jiang G, Li G, Sun Y, Tao B. Surface emg hand gesture recognition system based on pca and grnn. *Neural Computing and Applications*. 2019;:1–9.
- [28] Bu N, Okamoto M, Tsuji T. A hybrid motion classification approach for emg-based human–robot interfaces using bayesian and neural networks. *IEEE Transactions on Robotics*. 2009;25(3):502–511.
- [29] Ahsan MR, Ibrahimy MI, Khalifa OO. Emg motion pattern classification through design and optimization of neural network. In: *Biomedical engineering (icobe), 2012 international conference on*. IEEE. 2012. p. 175–179.
- [30] Karuna M, Ganesh C, Das RP, Kumar MV. Classification of wrist movements through emg signals with fuzzy logic algorithm. In: *2017 international conference on energy, communication, data analytics and soft computing (icecds)*. IEEE. 2017. p. 2258–2261.
- [31] Antuvan CW, Yen SC, Masia L. Simultaneous classification of hand and wrist motions using myoelectric interface: Beyond subject specificity. In: *Biomedical robotics and biomechatronics (biorob), 2016 6th IEEE international conference on*. IEEE. 2016. p. 1129–1134.
- [32] Chambon S, Galtier MN, Arnal PJ, Wainrib G, Gramfort A. A deep learning architecture for temporal sleep stage classification using multivariate and multimodal time series. *IEEE Transactions on Neural Systems and Rehabilitation Engineering*. 2018;.
- [33] Yang W, Yang D, Liu Y, Liu H. Decoding simultaneous multi-dof wrist movements from raw emg signals using a convolutional neural network. *IEEE Transactions on Human-Machine Systems*. 2019;.
- [34] Zhang D, Zhao X, Han J, Zhao Y. A comparative study on pca and lda based emg pattern recognition for anthropomorphic robotic hand. In: *2014 IEEE international conference on robotics and automation (icra)*. IEEE. 2014. p. 4850–4855.
- [35] Xiao ZG, Menon C. Performance of forearm fmg and semg for estimating elbow, forearm and wrist positions. *Journal of Bionic Engineering*. 2017;14(2):284–295.
- [36] Kundu AS, Mazumder O, Lenka PK, Bhaumik S. Hand gesture recognition based omnidirectional wheelchair control using imu and emg sensors. *Journal of Intelligent & Robotic Systems*. 2018;91(3-4):529–541.
- [37] Le Sant G, Gross R, Hug F, Nordez A. Influence of low muscle activation levels on the ankle torque and muscle shear modulus during plantar flexor stretching. *Journal of biomechanics*. 2019;.
- [38] Phinyomark A, Limsakul C, Phukpattaranont P. A novel feature extraction for robust emg pattern recognition. *arXiv preprint arXiv:09123973*. 2009;.
- [39] Subasi A. Classification of emg signals using combined features and soft computing techniques. *Applied soft computing*. 2012;12(8):2188–2198.
- [40] Krishnan S, Akash R, Kumar D, Jain R, Rathai KMM, Patil S. Finger movement pattern recognition

- from surface emg signals using machine learning algorithms. In: *Ictmi 2017*. Springer. 2019. p. 75–89.
- [41] Lu J, Plataniotis KN, Venetsanopoulos AN. Face recognition using LDA-based algorithms. *IEEE Transactions on Neural Networks*. 2003;14(1):195–200.
  - [42] Jing P, Heisterkamp DR, Dai HK. LDA/SVM driven nearest neighbor classification. *IEEE Transactions on Neural Networks*. 2003;14(4):940–2.
  - [43] Xue Y, Ju Z, Xiang K, Chen J, Liu H. Multimodal human hand motion sensing and analysisa review. *IEEE Transactions on Cognitive and Developmental Systems*. 2018;11(2):162–175.
  - [44] Li Z, Deng C, Zhao K. Human cooperative control of a wearable walking exoskeleton for enhancing climbing stair activities. *IEEE Transactions on Industrial Electronics*. 2019;.
  - [45] Li Z, Xu C, Wei Q, Shi C, Su CY. Human-inspired control of dual-arm exoskeleton robots with force and impedance adaptation. *IEEE Transactions on Systems, Man, and Cybernetics: Systems*. 2018;.
  - [46] He W, Meng T, He X, Sun C. Iterative learning control for a flapping wing micro aerial vehicle under distributed disturbances. *IEEE transactions on cybernetics*. 2018;49(4):1524–1535.
  - [47] Ju Z, Liu H. Human hand motion analysis with multisensory information. *IEEE/AsMe Transactions on Mechatronics*. 2013;19(2):456–466.